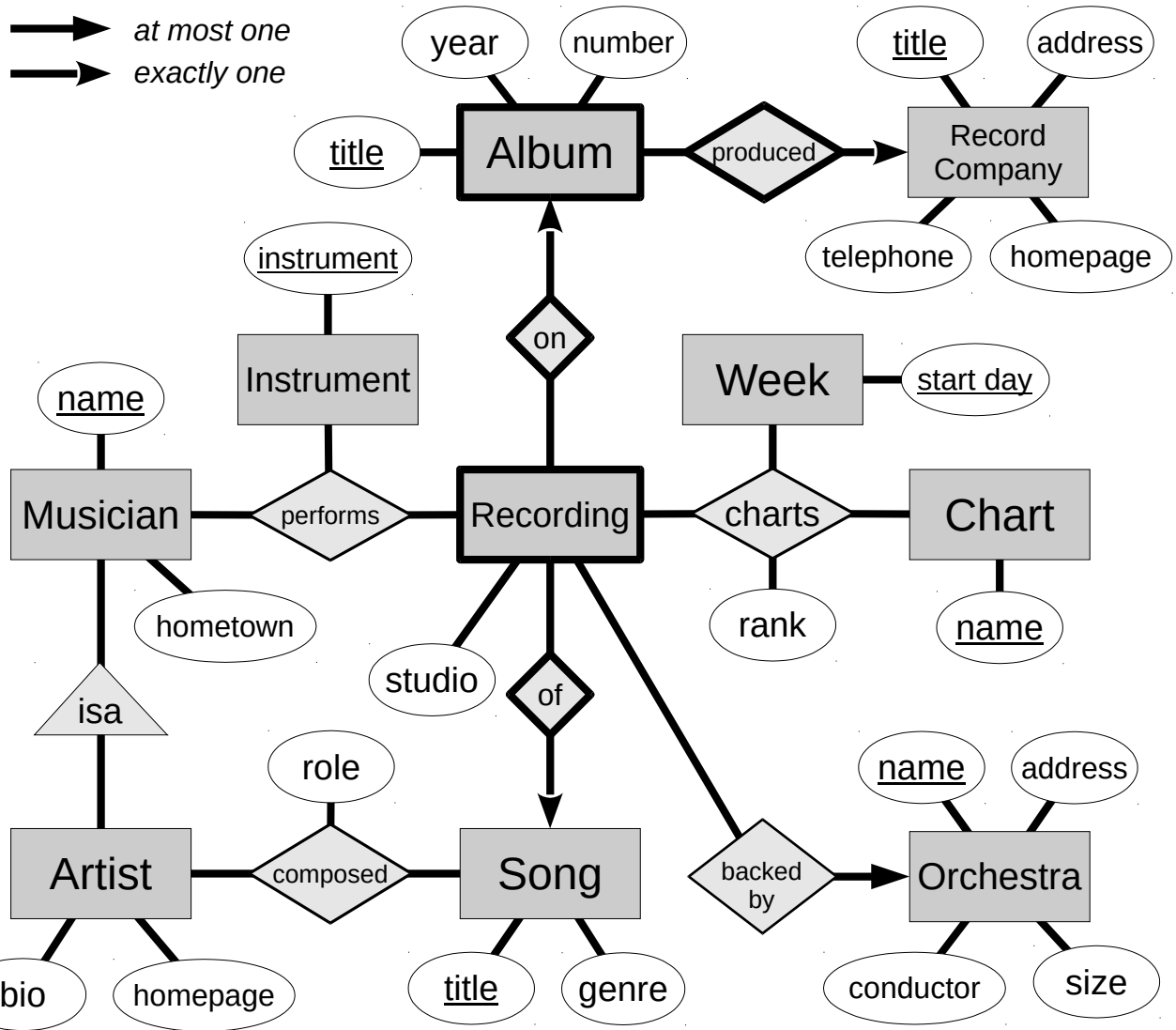


Songs E/R Diagram



- * The *recording* is weak on *album* which, in turn, is weak on *record company*, and *recording* is weak on *song*. Hence, recording's key is the *album's title*, the *record company's title*, and the *song's title*. The requirements stated for a *recording* to be identified by the *song's title* and the *album's title*. They also stated, however, that “an album is identified by its title and label, a synonym for the record company that produced it.” Thus, we adjusted the key accordingly for *recording*.
- * The requirements stated that “a song has been composed by one or more artists.” This “one or more” (*mandatory participation*) cannot be captured in a *many-many* relationship in the Stanford dialect
- * For *charted*, the requirements did not elaborate deeply on the logic. It is important that a *recording* could “chart” on a given chart more than once, in different weeks. Making *charts* a multi-way relationship with *week* as a participant accommodates this. Of course, the way music charts work, they will not have *two* different recordings at the same *rank* in a given week, nor will they have the same recording in the same week appearing at two or more ranks. The present design does not address the former, but does the latter..