

# How to Access Lab Resources Remotely

---

By Steven Castellucci (3.0, September 2015)

## Initial Set-Up

### Install *VirtualBox*

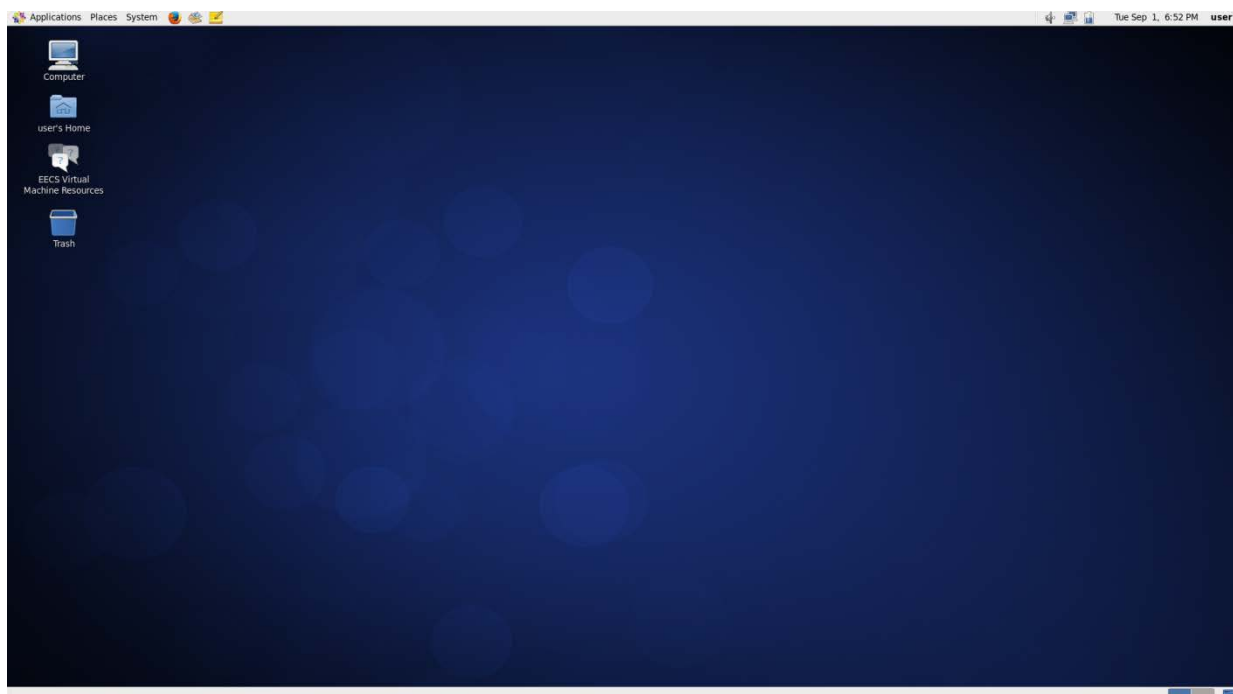
*VirtualBox* is an application to run virtual machines files. A virtual machine (VM) is a (large, 20 GB) data file that encapsulates a separate computer system and simulates its operation using the resources of its host system. Download and install the *VirtualBox* software for your system. Also download and install the extension pack to support USB devices. They are available at [www.virtualbox.org/wiki/Downloads](http://www.virtualbox.org/wiki/Downloads).

### Download the VM

Download the VM file from the link below. Use username: `common` and password: `common`.

<http://dl.eecs.yorku.ca/common/eecs-vbox-common-latest.ova>

Open the VM file by double-clicking it. The VM will configure itself and start. This might take several minutes. When the VM has fully booted, the following desktop will appear. Within the VM, your username is `user` and the password is `eecsroot`. Unlike an actual Prism workstation, you have full control over this virtual machine. You can start the file manager by opening “Computer”, or start an application from the Applications menu at the top of the screen. To end the VM, open the System menu and select “Shutdown”.

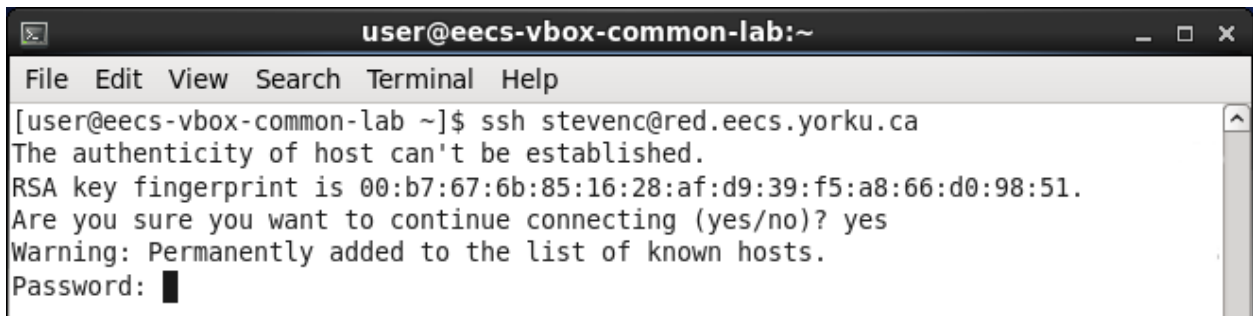
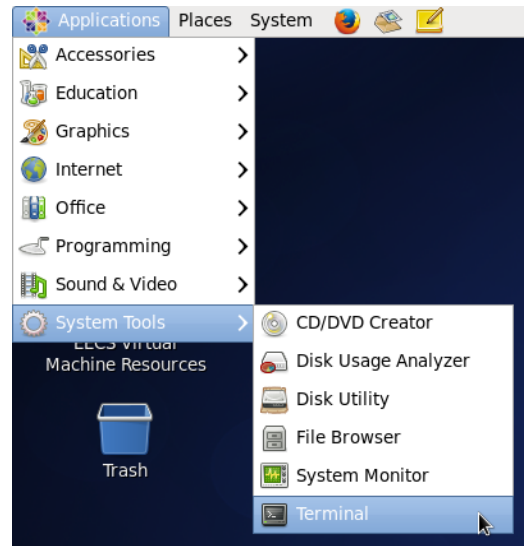


## Connecting to Prism

Establishing an SSH connection to Prism allows you to issue commands as if you were using the terminal at one of the workstations in the lab. To do so, open the Applications menu, select “System Tools”, and then select “Terminal”. Type the following command:

```
ssh username@red.eecs.yorku.ca
```

However, replace “username” with your own EECS username. Press Enter. If this is your first time connecting, you will be prompted to accept and save the fingerprint of the server. When prompted, type your password (the cursor will not move as you type) and press Enter.



## Transferring Files

To transfer files between your EECS account and the VM, open the Places menu on the Desktop, and then select “Connect to Server”. Select “FTP (with login)” as the service type and fill-in the information as below. Replace “stevenc” with your own EECS username. After clicking “Connect”, a window will open, allowing you to copy and paste, or drag and drop files.

