

# Notes on ESPEC

# What is ESpec?

- A collection of classes that help organize the test cases for a program
- A user adds test cases to the appropriate structure
- The **ESpec** sub-system runs the test cases
- A report is created in one html file for each test class and one html file that combines all the reports of all the test classes.
- You read the reports with a browser.

# Installing ESpec in Windows

**Be sure to install Eiffel 6.4 first**

- Go to the following web page  
<http://www.cse.yorku.ca/~sel/espec/download.htm>
- Click on [**Here**] on the first line
  - » **with label "Espec (Simplified without GUI)"**
- This downloads a zip file that you unzip producing the folder **espec\_simple**
- Move the folder to where you have your Eiffel projects.
- Set an environment variable **espec** to point to the folder **espec\_simple**
  - » **--> System control panel --> Advanced tab, and select the button Environment Variables**

## Example use of ESPEC – part 1

- All tests in one class

```
class ROOT_CLASS
```

```
inherit ES_TEST
```

```
create make
```

```
feature
```

```
  make is
```

```
    do
```

```
      add_boolean_case (agent bool1)
```

```
      add_violation_case (agent viol1)
```

```
      add_violation_case_with_tag ("tag", agent viol1)
```

```
      show_browser
```

```
      run_espec
```

```
    end
```

```
...
```

## Example use of ESPEC – part 2

- Have one **TEST\_CLASS** for every class you want to test

**class TEST\_CLASS**

**inherit ES\_TEST**

**create make**

**feature -- Test class creation**

**... See slide “Feature -- Test class creation”**

**feature -- Test cases**

**... See slide “Feature -- Test cases”**

**end -- TEST\_CLASS**

## Feature -- Test class creation

# make is

## -- Defines the test cases to use

**do**

## add\_boolean\_case (agent test\_junk)

## add\_violation\_case (agent test\_precondition)

```
add_violation_case_with_tag ("valid_bounds"  
    , agent test_precondition)
```

**end**

## Feature -- Test cases creation

**test\_junk : BOOLEAN is**

**do**

**comment("test\_junk")**

**Result := true**      **-- Try with false**

**end**

**test\_precondition is**

**local array : ARRAY[STRING]**

**do**

**comment("test\_precondition")**

**create array.make(5,1)**    **-- Try with make(1,5)**

**-- Try after changing, on previous slide,**

**-- “valid\_bounds” to “wrong\_tag”**

**end**

# Putting many test classes together

- Have one **ROOT\_TEST** for the system

**class ROOT\_TEST**

**inherit ES\_SUITE**

**create make**

**feature make is**

**do**

One for each  
class to test

**add\_test(create {TEST\_CLASS\_1}.make)**

**add\_test(create {TEST\_CLASS\_2}.make)**

**show\_browser**

**run\_espec**

**end**

Note different  
inherit class

Automatically starts the  
default browser

For later runs need to  
reload the page



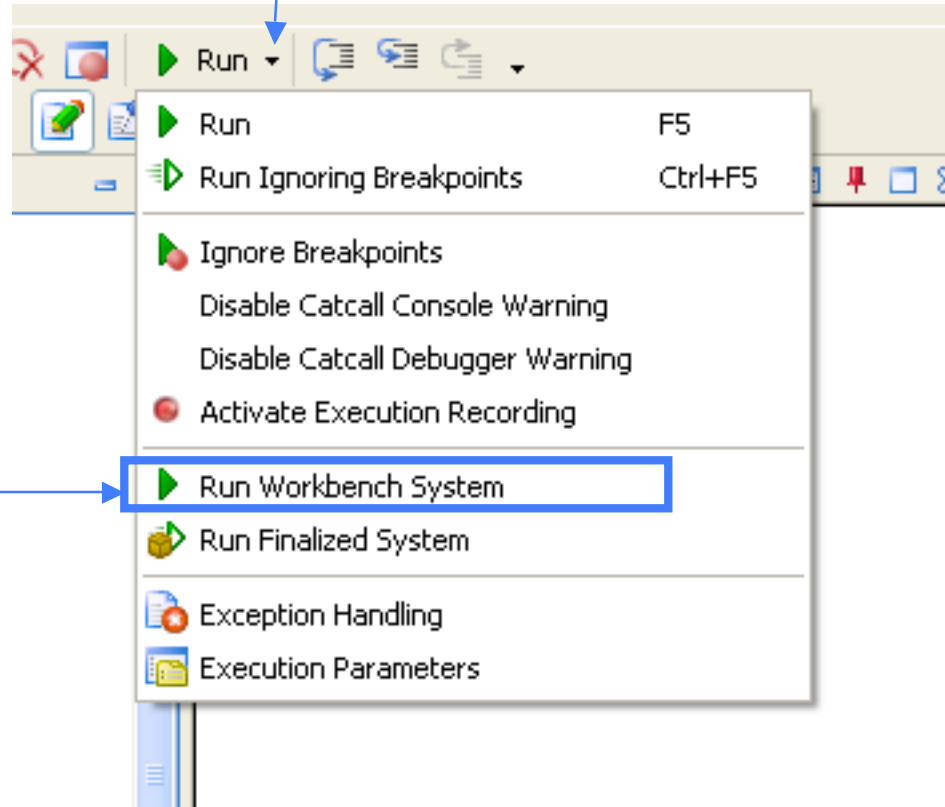
# Running the tests – method 1

Press and release – slower than a click –  
the arrow beside the Run button to get the menu

The system will run when  
Run is clicked BUT it will  
stop at every false assertion.

Need to keep clicking Run  
to continue execution – a PAIN

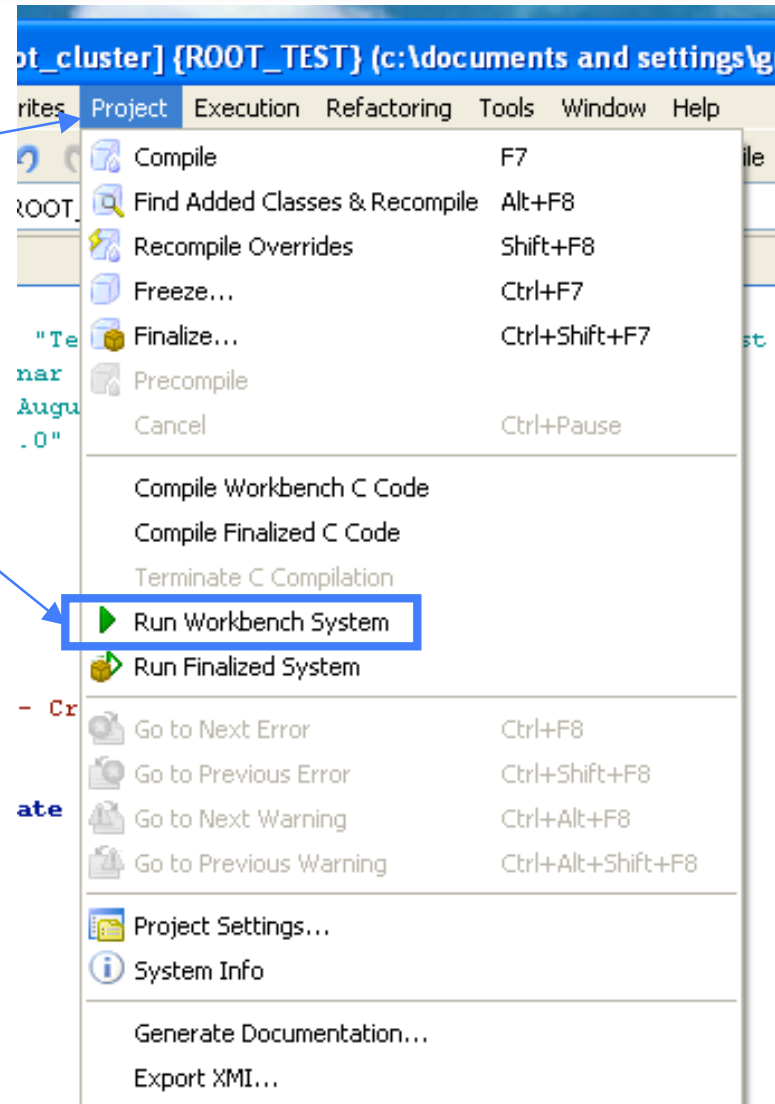
Select



## Running the tests – method 2

Click the Project button  
to get the menu

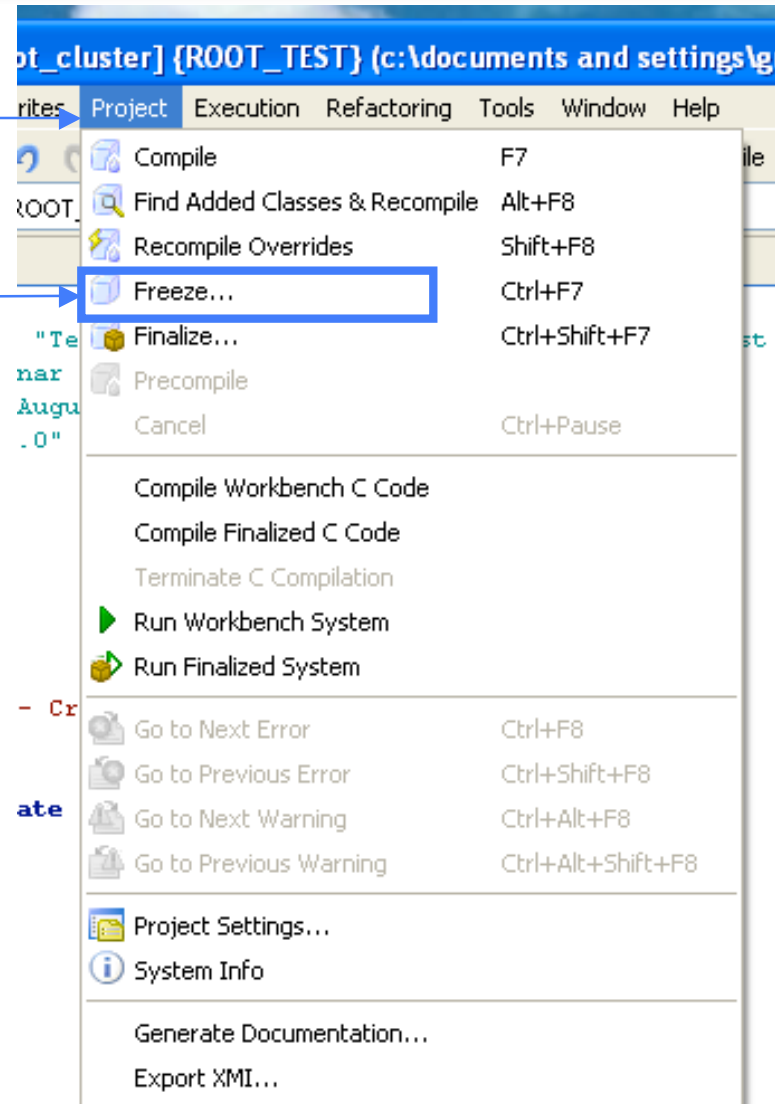
Select



# Freeze'ing the system

Click the Project button  
to get the menu

Select



Sometimes, when new agents are created, the system will terminate with an error message. In that case you freeze the system.