



Chapter 2: *Using Multiple Worksheets in a Model*

Objectives

This chapter is intended to expand on the features of Excel introduced in the demonstration models of Chapter 1. As the title implies, a general objective of the chapter is for you to understand why multiple worksheets are used in a model and how these can be related to each other by the use of formulas which use data from different worksheets. In addition some principles of how to design a model are introduced.

Here is a list of what the chapter covers:

- naming data ranges
- creating inter-sheet formulas
- using more of the functions available in Excel
- creating more charts and graphs

Preparation

Read the whole of this chapter carefully.

Introduction

This chapter consists of a number of different exercises that demonstrate the use of multiple worksheets in a spreadsheet model. The first few exercises lead you through most of the details of building the models – but as you progress fewer and fewer instructions are provided. It is expected that you will not simply follow the instructions by rote, but rather think carefully about what you are doing and why you are doing it so that you can apply the same principles and techniques yourself.

The exercises continue to develop the use of cell range and formula naming as a means of clarifying the data on a spreadsheet; the use of more of the functions that are provided by Excel; and the use of charts to present the data. The main objective, however, is to understand how and why inter-sheet formulas are used.

Exercise 1 - A Sales Taxes Model

Open the file Exercise1 in Support Files (Chapter 2), found in Resources on the course website. The model consists of three worksheets – examine the Comments worksheet and the other two now. The Sales_Summary worksheet contains some “raw” data and some headings where data is to be calculated. The Tax_Rates worksheet contains just the two values for GST and PST rates (pre-HST in Ontario, or pretend you live in B.C.) – values that rarely change. Your task in this exercise is to complete the



model – i.e. to create formulas so that the Sales_Summary worksheet looks like Figure 2.1.

Figure 2.1 – the completed Sales Summary worksheet

	A	B	C	D	E	F	G	H
1	Item	Price Each	Quantity	Cost	PST	GST	Total	
2	Shirt	\$ 15.50	20	\$ 310.00	\$ 24.80	\$ 15.50	\$ 350.30	
3	Hat	\$ 9.99	12	\$ 119.88	\$ 9.59	\$ 5.99	\$ 135.46	
4	Shoe	\$ 35.50	8	\$ 284.00	\$ 22.72	\$ 14.20	\$ 320.92	
5	Sock	\$ 3.50	23	\$ 80.50	\$ 6.44	\$ 4.03	\$ 90.97	
6	Tie	\$ 19.95	7	\$ 139.65	\$ 11.17	\$ 6.98	\$ 157.80	
7	Belt	\$ 17.99	9	\$ 161.91	\$ 12.95	\$ 8.10	\$ 182.96	
8	Dress	\$ 28.50	14	\$ 399.00	\$ 31.92	\$ 19.95	\$ 450.87	
9	Pants	\$ 32.50	19	\$ 617.50	\$ 49.40	\$ 30.88	\$ 697.78	
10								
11								
12								

Naming Data Ranges

The Cost column is just the price each multiplied by the quantity for each item listed. One simple way to create the formula for the cost is to follow the steps shown next. Observe the formula bar as you do this in order to see the formula as it is built.

- Select the first cell in the Cost column
- Type an = symbol to begin specifying a formula
- Click in the first cell in the Price Each column
- Type an * (the multiplication operator)
- Click on the first cell in the Quantity column
- Press the Enter key

You could then fill this formula down the Cost column. However, because it uses just the default cell naming conventions of Excel (=B2*C2) the formula is really quite difficult to understand. If the model were large it would be very difficult to understand a formula like this. It would be much better if the formula for cells in the Cost column appeared as:

Price Each * Quantity

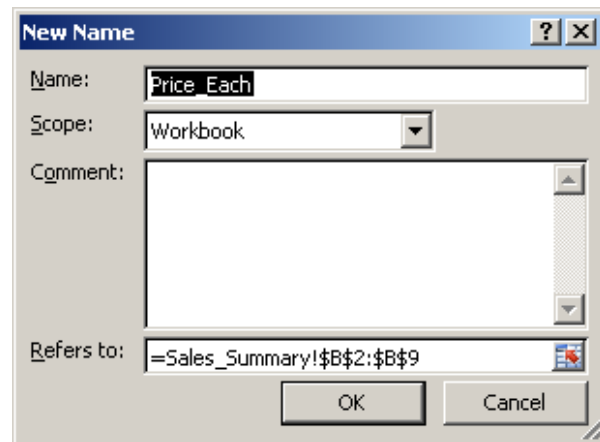
You can make this happen by naming the cell ranges. In Excel 2003, first select the data in the Price Each column and then choose Name/Define from the Insert menu command. The window shown in Figure 2.2 should appear. Notice that a name has been chosen for you based on the column heading except that the space in Price Each has been replaced



with the underscore (_) symbol because spaces are not valid characters in names. Often the name chosen for you will be acceptable; but you are free to change it if you wish.

First select the data in the Price Each column and then select the Formulas tab, and inside that select the Define Name command found in the Defined Names group. A window similar to the one shown in Figure 2.2 should appear. The differences are that the Title bar shows New Name instead of Define Name, Name and Scope: Workbook instead of Names in workbook:, and two buttons (OK, Cancel) instead of four buttons. Otherwise, this window behaves in the same way as in Excel 2003.

Figure 2.2 – the Define Name window



Notice too the **Refers to:** text box in which the cell references specifying the column of data appear. The reason why there are \$ symbols in the data range specification is discussed below in the section titled **Absolute versus Relative Cell References**.

You can carry out the same sequence of operations in order to name the column of **Quantity** data – i.e. select the Formulas tab, and inside that select the Define Name command found in the Defined Names group, and click on the OK button.

Now return to constructing the formula for the **Cost** column of data. First delete the formula you created previously for the first cell. Make sure the first cell is selected and create the formula:

- Type an = symbol
- Click on the Formulas tab and then select Use in Formula found in the Defined Names group and select Price_Each from the list.
- Type * (the multiplication operator)
- Choose Quantity from the list of names produced by clicking on Use in Formula.
- Press the Enter key



Making sure the first cell is selected drag the fill handle down the column to fill the other cells with this formula. (Remember that the fill handle is the lower right corner of the active cell - the one with the black border - and the cursor changes to a cross (+) when it is positioned correctly to do the drag operation.) Clearly this formula makes much more sense to the reader (either you yourself or someone else) now that names are used.

Make sure that the column of numbers is properly formatted as currency.

Calculating the PST Column

The PST column could be created by the following steps – perform them now and see if you can understand the results.

- Select the first cell in the PST column and type an = symbol
- Click on the first cell in the Cost column
- Type an * (multiplication operator)
- Click on the Tax_Rates worksheet tab, and then on the value for PST in that worksheet (notice as you do this how the worksheet name appears in the formula you are creating), and then press Enter.
- Fill this formula down the column

You probably have a spreadsheet resembling Figure 2.3, in which most of the values in the PST column are clearly wrong. What is the error here?

We'll examine the formulas carefully one by one. The formula in the first cell is

`=D2*Tax_Rates!B3`

and in the second cell it is:

`=D3*Tax_Rates!B4`

Notice that D2 in the first formula refers to the first cell of the Cost column and that D3 in the second formula refers to the second cell of the Cost column, which is what we want. However, while Tax_Rates!B3 in the first formula is the correct cell reference for the PST value, it has been changed to Tax_Rates!B4 in the second formula.

The third cell has the formula:

`=D4*Tax_Rates!B5`



Figure 2.3 – Incorrect results from relative cell references

	A	B	C	D	E	F	G	H
1	Item	Price Each	Quantity	Cost	PST	GST	Total	
2	Shirt	\$ 15.50	20	\$ 310.00	24.8			
3	Hat	\$ 9.99	12	\$ 119.88	5.994			
4	Shoe	\$ 35.50	8	\$ 284.00	0			
5	Sock	\$ 3.50	23	\$ 80.50	0			
6	Tie	\$ 19.95	7	\$ 139.65	0			
7	Belt	\$ 17.99	9	\$ 161.91	0			
8	Dress	\$ 28.50	14	\$ 399.00	0			
9	Pants	\$ 32.50	19	\$ 617.50	0			
10								
11								
12								

The D4 cell reference is correct – it refers to the 3rd cell in the Cost column, but the Tax_Rates!B5 cell reference refers to an empty cell!

Not only have the cell references for the Cost column been adjusted when the formula was filled down the column, but the PST cell reference, which should have been fixed, has also been adjusted relatively.

Absolute versus Relative Cell References

This kind of error can be fixed by typing the \$ symbol as a prefix to either the letter, or the number, or both, in a cell reference. The \$ symbol makes the reference (the column, row or both) absolute, which means that when the formula is filled the cell reference will not change.

- If the column reference of a cell is made absolute (e.g. \$F10) then when a formula using such a reference is filled across a row the cell referred to remains constant, but if the formula is filled down a column the cell referred to changes (to \$F11, \$F12 etc). Make sure you understand this point by experimenting with it.
- If the row reference of a cell is made absolute (e.g. F\$10) then when a formula using such a reference is filled across a row the cell referred to changes (to G\$10, H\$10 etc), and if the formula is filled down a column the cell referred to remains constant.
- If both the row and column reference of a cell are made absolute (e.g. \$F\$10) then the cell referred to remains constant regardless of the fill down or fill across operation.
- The above is true for copying and pasting or cutting and pasting cells in general. Fill down and fill across are just specialized copy/paste operations.



Naming the Parameters

One way to fix the problem with calculating the PST column is to remember to type the \$ symbols in the formula. Select the first cell in the column, insert the \$ symbols

$$=D2*Tax_Rates!\$B\$3$$

and then fill this formula down the column. The correct values will appear.

A much better approach is to name the cell that contains the PST value. So select the Tax_Rates worksheet, and then the cell containing the PST value and choose Define Name in the Defined Names group inside the Formulas tab. A suitable name should appear automatically, so examine it and click on the OK button. Do the same for the GST value. Actually, in both cases the automatically generated names (PST and GST) will clash with names you will want for the PST and GST columns in the Sales_Summary worksheet, so alter the names to PST_Rate and GST_Rate as you define them.

Clear the formulas for the PST column in the Sales_Summary worksheet (select the cells and choose Clear All from Clear, found in the Editing group inside the Home tab), and recreate the formula using the names you have just defined. Create the formulas for the GST column in the same way.

The Total Column

The data in the Total column should be calculated by a formula:

$$= \text{Cost} + \text{PST} + \text{GST}$$

which is filled down the column. Define the names necessary to do this and finish building the spreadsheet model so that the results match Figure 2.1.

Exercise 2 - A Retail Store Budget Model

You may have thought to yourself:

“I don’t need to name these things – in fact it’s much simpler just to type 0.08 for GST or 0.07 for PST directly in the formula. Why bother with putting these values on another worksheet and referring to them in the formulas?”

Well, hopefully this next model will answer that question for you. Open the file called Exercise 2a in Support Files (Chapter 2) and read the Comments worksheet.



Figure 2.4 – the Retail Store Budget model

	January	February	March	Q1 Total
First Quarter Budget				
	January	February	March	Q1 Total
Sales				
Clothing	\$ 140,000.00	\$ 125,000.00	\$ 135,000.00	\$ 400,000.00
Hard Goods	\$ 94,000.00	\$ 97,000.00	\$ 120,000.00	\$ 311,000.00
Total Sales	\$ 234,000.00	\$ 222,000.00	\$ 255,000.00	\$ 711,000.00
Government Remittances				
Sales taxes	\$ 30,521.74	\$ 28,956.52	\$ 33,260.87	\$ 92,739.13
Payroll taxes	\$ 2,170.00	\$ 2,030.00	\$ 2,240.00	\$ 6,440.00
Total Remittances	\$ 32,691.74	\$ 30,986.52	\$ 35,500.87	\$ 99,179.13
Expenses				
Advertising	\$ 9,360.00	\$ 8,880.00	\$ 10,200.00	\$ 28,440.00
Cost of goods	\$ 109,980.00	\$ 104,340.00	\$ 119,850.00	\$ 334,170.00
Payroll	\$ 31,000.00	\$ 29,000.00	\$ 32,000.00	\$ 92,000.00
Lease	\$ 19,000.00	\$ 19,000.00	\$ 19,000.00	\$ 57,000.00
Miscellaneous	\$ 6,000.00	\$ 6,000.00	\$ 6,000.00	\$ 18,000.00
Franchise cost	\$ 25,243.48	\$ 24,513.04	\$ 26,521.74	\$ 76,278.26
Total Expenses	\$ 200,583.48	\$ 191,733.04	\$ 213,571.74	\$ 605,888.26
Surplus(Deficit)	\$ 724.78	\$ (719.57)	\$ 5,927.39	\$ 5,932.61

Changing the Model Parameters

The model shows estimated sales for two types of goods by a retail store, and then various amounts that must be subtracted from the total sales revenue to arrive at a surplus/deficit figure.

One type of deduction is for amounts remitted to government for sales taxes and payroll taxes. Sales taxes are calculated from total sales, which are assumed to include the taxes (being cash register receipts, for example). Payroll taxes are a percentage (7%) of the salaries paid to employees. Other deductions are for actual costs – for advertising, wholesale cost of goods, lease, payroll etc.

The government has just delivered a budget in which the provincial sales tax has changed to 9% and the payroll tax has changed to 6%. The franchiser decides to change their fee to a flat rate of \$12,000 plus 5% of total sales. Can you modify the worksheet to incorporate these changes? Go ahead and try.

No doubt you will carefully study the formulas in an attempt to make sense of the various figures contained in them in an effort to decide which values you need to change. This is not so easy - as you will discover.



On the other hand, open the file **Exercise 2b** in the **Support files** (Chapter 2) and try making the changes in this model. You should find it much easier.

Adding to the Retail Budget Model

The purpose of a spreadsheet is often to simulate some problem situation. Here in this exercise 2 model the simulation is of a microeconomic nature – budgeting for a retail store. The owner might be interested in how many hours on a Sunday the store might be able to open and what effect that would have in terms of payroll costs versus extra sales. Would it be worth it to open on a Sunday?

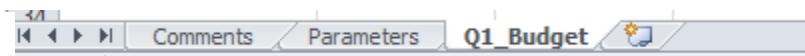
Currently the data in the payroll row is an estimated value entered as “raw data” onto the worksheet. But the figure really represents the end result of a staffing model. The staffing model might consist of a number of sales persons at 8 or 10 hours per day on weekdays, 8 sales persons on Saturdays for 10 hours and 3 salespersons on Sundays for 4 hours. The hourly pay might be \$9.50 for salespersons. In addition there might be a supervisor or two at all times, at an hourly pay of \$15.00.

Clearly those three figures in the Payroll row represent a lot of information. Why not incorporate all of this modeling in another worksheet which will provide the data from which the payroll figures can be calculated? This section will step you through this task.

Adding a Worksheet

First you need a new worksheet – the fourth in this model. Click on the **Insert Worksheet** icon, next to the last worksheet tab. The new sheet is inserted to the right of the last sheet. You can drag the new sheet to position it wherever you like – to the right of the **Q1_Budget** worksheet would be best.

Inserting the new sheet:



Building the Staffing Model

Rename the new worksheet **StaffingModel** and then construct it roughly like Figure 2.5. To do this you will need to add to the **Parameters** worksheet values for the labour costs – namely an hourly pay rate for sales persons and an hourly pay rate for supervisors. The **Number** and **Hours** rows contain “raw data” but the **Amount** row is calculated using the hourly pay rate (from the **Parameters** worksheet) and the total number of hours. The **Total Payroll Costs per Week** is also calculated from the data in this worksheet.

The **Payroll** line in the **Q1_Budget** worksheet can now use this figure for weekly payroll costs to calculate the monthly payroll cost (because there are more than 4 weeks in a month you should multiply by about 4.2). Construct the formula to compute the monthly payroll in the **Q1_Budget** worksheet and fill it across the three months. The part of the **Q1_Budget** worksheet dealing with the weekly payroll will now look as follows:



14	Expenses					
15	Advertising	\$ 9,360.00	\$ 8,880.00	\$ 10,200.00	\$ 28,440.00	
16	Cost of goods	\$ 109,980.00	\$ 104,340.00	\$ 119,850.00	\$ 334,170.00	
17	Payroll	\$ 18,454.80	\$ 18,454.80	\$ 18,454.80	\$ 55,364.40	

Figure 2.5 – the Staffing Model worksheet

	Monday	Tuesday	Wednesday	Thursday	Friday	Saturday	Sunday
Sales Persons							
Number	5	5	5	5	6	8	3
Hours	8	8	8	10	10	10	4
Amount	\$ 380.00	\$ 380.00	\$ 380.00	\$ 475.00	\$ 570.00	\$ 760.00	\$ 114.00
Supervisor							
Number	1	1	1	2	2	2	1
Hours	8	8	8	10	10	10	5
Amount	\$ 120.00	\$ 120.00	\$ 120.00	\$ 300.00	\$ 300.00	\$ 300.00	\$ 75.00
Total Payroll Costs per Week:				\$ 4,394.00			

Commentary

Before adding this StaffingModel worksheet it was not possible to easily see the effect of a realistic payroll amount on the budget model. Now, not only can you see the effect of adjusting hours worked on any day of the week, or changing the number of employees on any day, but you can also see the effect of adjusting hourly pay rates. (Hopefully you could afford to pay your employees better!) In terms of modeling a problem it is far more effective to replace raw data with some method of calculating such data.

Of course, the model is still far from realistic. For example, you might want the sales figures in the Q1_Budget worksheet to be computed rather than just entered. To construct a model that accounts more realistically for the processes involved can become very complex.

Exercise 3 - A Gas Equation Model

The pressure, volume, and temperature of a fixed amount of gas are related to each other. If you have a closed container (i.e. the volume cannot change) and you heat it the pressure will increase. On the other hand if you have a container whose volume can change and, keeping the temperature constant, you increase the volume then the gas pressure inside will decrease.



According to one model of these physical phenomena the quantities are related by $PV = nRT$, where P is the pressure, V is the volume, n is the amount of gas, R is a quantity called the gas constant and T is the temperature. This is called the ideal gas equation. It assumes that gas molecules behave “ideally”, which means that they bounce around inside the container without influencing each other except when they collide, and then they behave like very small hard balls.

Another model relates these quantities by the equation $(P + n^2a/V^2)(V - nb) = nRT$. This is called the van der Waals equation and it attempts to take account of the fact that there are forces of attraction between gas molecules, and that the molecules themselves occupy a certain volume. The parameters a and b are constants that are determined by experiment and that are different for different gases. For chlorine gas, which we will model, the value of a is $6.49 \text{ liter}^2\text{atmosphere/mole}^2$ and the value of b is $0.0562 \text{ liter/mole}$.

You need not understand the physical phenomena underlying these models. But you must understand the techniques of implementing a model using the spreadsheet. We would like to keep n and T constant and to calculate P as we vary V , for example. We hope to see if P as predicted by the van der Waals equation is very different from P as predicted by the Ideal Gas equation.

The question is how should we design our spreadsheet model? Give this some thought before reading on. Answer for yourself how you would arrange the data into worksheets to create a flexible model. By flexible, we mean that certain numbers – the temperature or n , for example – can be easily changed.

The Main Data Worksheet

You want to calculate P for a whole lot of values of V (other things being held constant). This means you should have a column in your worksheet to contain the different values of V – perhaps the first value for V will be 0.5 (meaning 0.5 liter) and the next will be 0.52, and then 0.54 etc for perhaps 50 or so values.

Do this now. Launch Excel (or close other workbooks and create a new one if Excel is already running), rename **Sheet1** to **Comments** and type a brief explanation of what you are about to do, as best you can at this point. Rename **Sheet2** to **PressureVolume**. Now type a column heading – **Volume** – and format it in some way, then the type first value (0.5) and select down the column for about 50 cells. You are going to fill these 50 cells with the series of volume numbers. So, choose **Series...** from the **Fill** command menu, found in the **Editing** group inside the **Home** tab, and change the step value to 0.02. (Refer back to the cosine function exercise in Chapter 1 if you need further guidance doing this.)



The Ideal Gas Calculation of P

Next you'll want a column for P as calculated by the Ideal Gas equation – so type a suitable column heading and format it. Now you need to enter the formula that calculates P, namely:

$$P = nRT/V$$

You have values for V, but you also need values for n, R and T. We might want to change n and T but R can never change – it is one of those physical constants like g the gravitational constant. Despite this difference between n and T compared to R we should probably enter all three on a third **Parameters** worksheet. So change the name of **Sheet3** to **Parameters** and type headings for the values and enter 0.2 for n (being 0.2 moles of gas), 0.082057 for R (the units are litre atm/mole/degreeK) and 200 for T (being in units of degrees Kelvin).

Give names to these values using, **Define Name** in the **Defined Names** group inside the **Formulas** tab. Before you proceed to create the formula that calculates the P values you should also define a name for the whole V column.

You can now create the formula for the first P cell. It should look very similar to the formula given above now that you have created names for the various cells. Fill it down the entire P column.

The van der Waals Calculation of P

The van der Waals equation can be rearranged algebraically to give

$$P = nRT/(V - nb) - n^2a/V^2$$

Some of the parameters – namely n, R and T - are already available in the **Parameters** worksheet, and now you must add the two van der Waals constants, a and b, whose values for chlorine gas were given previously. When you add these values to the **Parameters** worksheet be sure to give them names that you can use in the formula.

Your Parameter worksheet should look something like that shown in Figure 2.6 after you have formatted things nicely.



Figure 2.6 – the Parameters worksheet for the Gas Equation model

	A	B	C	D	E	F	G	H	I	
1	Ideal Gas Equation Constants					Van der Waals Constants				
2						for Cl2				
3		Value	Units				Value	Units		
4	n	0.2	moles			a	6.49	litre^2 atm/mole/mole		
5	R	0.082057	litre atm/mole/degreeK			b	0.0562	litre/mole		
6	T	200	degreeK							

Next you need to calculate the pressure using the van der Waals equation. Create a suitable column heading in the **PressureVolume** worksheet, create the formula for P according to the van der Waals equation, and fill the formula down the column.

Figure 2.7 – a portion of the PressureVolume worksheet

	A	B	C
		Ideal Gas	Van Der Waals Gas
1	Volume	Pressure	Pressure
2	0.5	6.5646	5.6771
3	0.52	6.3121	5.4915
4	0.54	6.0783	5.3172
5	0.56	5.8612	5.1535

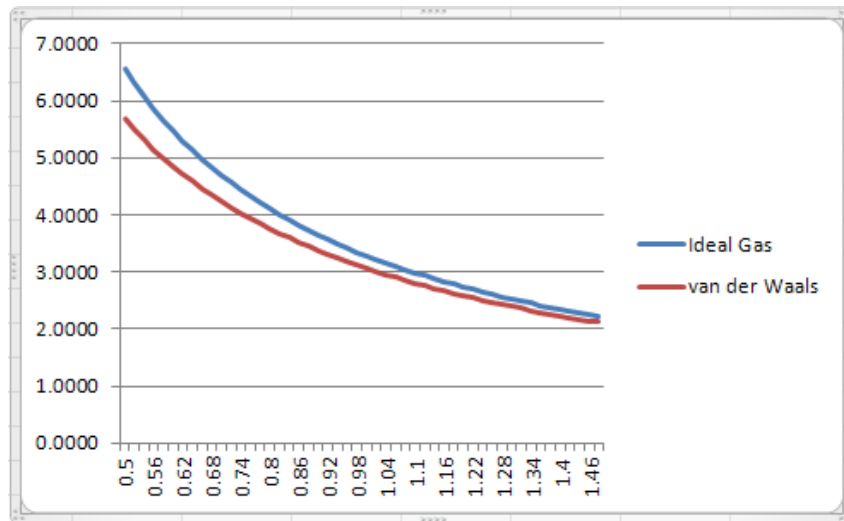
Creating a Graph

The table of numbers is not very helpful in comparing the results of the two equations. It would be very much easier to see the differences if we create a graph. Review the section **Creating a Graph** from the cosine function exercise in Chapter 1, which explains in some detail the steps involved. The instructions here are deliberately minimal.

There will be two lines on this graph – one for the ideal gas calculation of P and the other for the van der Waals calculation of P. These two lines and the data they represent are called series. In **Select Data**, for the first series you add under **Legend Entries (Series)** select the data for the ideal gas pressure calculation, and give it a name such as **Ideal Gas**. This name will appear in a legend identifying the line on the graph that represents this calculation of the pressure. Next add another series for the van der Waals gas pressure calculation and give it the name **van der Waals**. Under **Horizontal (Category) Axis Labels**, select the data you would like to use for the horizontal axis – in this case it will be the column of **Volume** data. This window should end up looking like Figure 2.8.

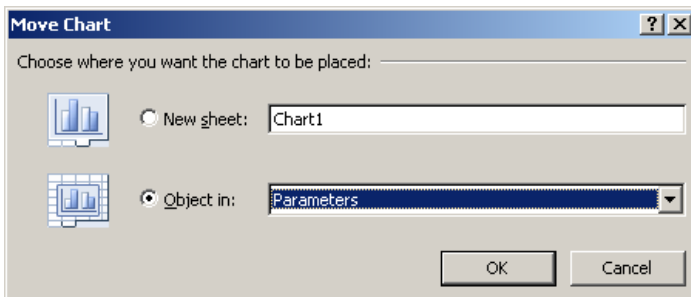


Figure 2.8 – naming the series and specifying the X axis data



This time the standardized Chart Layouts will not be used. The remaining components of the chart will be created one-by-one. The creation of the chart title, the two axes titles, switching off all gridlines, and positioning the legend at the bottom can be accomplished by selecting the Chart Tools/Layout tab and then clicking on Chart Title, Axis Titles (twice), Gridlines and Legend respectively, and choosing from the menus in each case.

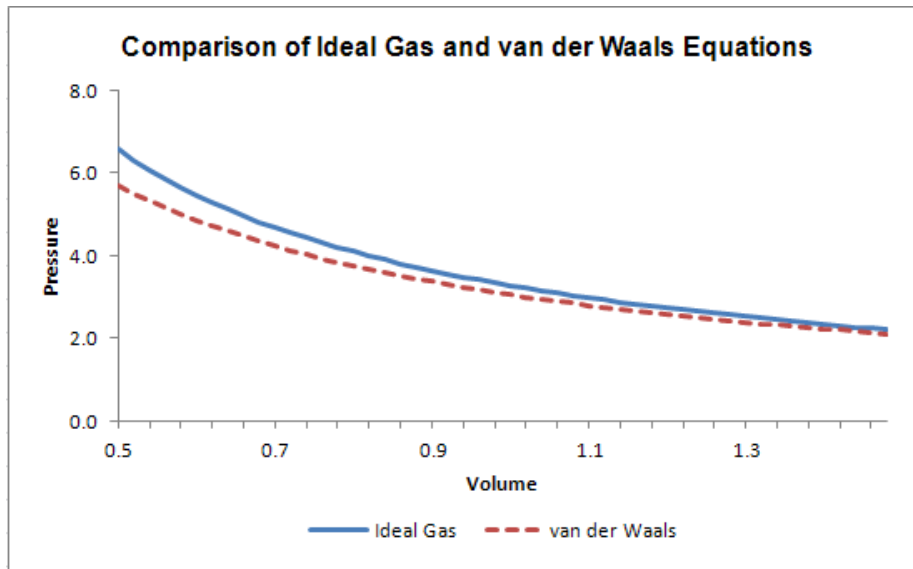
The graph had been originally placed on the Pressure/Volume worksheet. Choose Move Chart Location in the Chart Tools/Design tab to place the chart on the Parameters worksheet.



Continue to “fine tune” the chart by changing its size, positioning it appropriately with respect to the data in the Parameters worksheet, changing the font sizes for the title and axes titles, and changing the tick marks and labels displayed on the axes. Also make one of the lines on the graph a dashed line, by the normal method of selecting it by double clicking on the line itself and then choosing from the options available to you (Line Style).



Figure 2.9 – the Gas Equation graph



Commentary

Having placed the graph on the parameters worksheet you are easily able to compare the two equations when you change the parameter values. Try changing T or n for example to see the effect. You can also change a or b but the results will not then be for a real gas since the values given are specifically for chlorine gas.

Exercise 4 - The Cobb-Douglas Model

This next exercise is fundamentally the same as the previous, although in a different context. Consequently, the instructions will be somewhat briefer.

Economists have found that the output of a firm is often related to the level of investment in labour and machinery, and is given by the equation:

$$S = fL^{a_{\text{labour}}} M^{a_{\text{machinery}}}$$

where S is the output supply, L is the investment in labour, M is the investment in machinery, f is a constant, and a_{labour} and $a_{\text{machinery}}$ are the so called elasticities of production for labour and machinery.

Typically, total capital investment can be expressed as:

$$K = eL + M$$



where the coefficient e (a constant) implies that a unit of investment in labour is equivalent to more or less than a unit of investment in machinery depending on whether e is greater than or less than 1.

These two equations suggest that given a total investment K , it can be split between investments in labour and machinery, and that it should be possible to choose investments in L and M in such a way as to maximise output supply S .

The spreadsheet model we develop will investigate this graphically. We will plot L on the vertical axis and M on the horizontal axis for both of these equations – that is we will plot L as a function of M where in one case L is given by

$$L = (S / (f M^{a_{\text{machinery}}}))^{1/a_{\text{labour}}}$$

and in the other by

$$L = (K - M) / e$$

S and K will be parameters, meaning that we will perhaps choose a value for the output supply, S , that we want to achieve and adjust total investment K to try to minimise it while achieving output supply S . The values $a_{\text{machinery}}$, a_{labour} , f and e will be constants.

Creating the Data Worksheets

You'll need a **Comments** worksheet, a **Parameters** worksheet and a **Data** worksheet.

Write a short explanation in the **Comments** worksheet as best you can at this point, and remember to come back to expand on it after you have completed the model and understand it better.

The **Parameters** worksheet will contain $a_{\text{machinery}}$, a_{labour} , f and e with values 1.0, 1.2, 0.1 and 0.75 respectively. It will also contain values for K and S – say 60 and 50 to begin with. In addition, the **Parameters** worksheet will contain the graph. Layout this worksheet now, leaving room for the graph. Make sure you format it nicely and that you name the various cells containing data for use later in formulas.

The **Data** worksheet will contain three columns – one for M values (say 40 values starting at 0 with a step of 2), one for L as calculated using the output supply formula and one for L as calculated using the total investment formula. Part of the **Data** worksheet is shown in Figure 2.10. Notice that the first cell in the $L(S)$ column is empty. Make sure you do the calculation for this cell to see what happens (why does it happen?) and then clear the contents of that first cell.



Figure 2.10 – part of the Cobb-Douglas Data worksheet

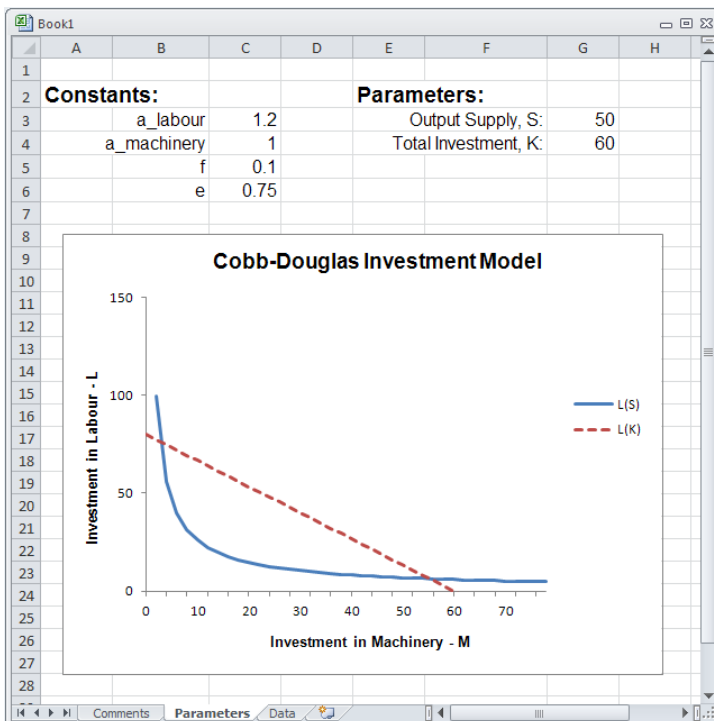
	A	B	C
1	M	L(S)	L(K)
2		0	80
3	2	99.6055	77.33333
4	4	55.9017	74.66667
5	6	39.87331	72
6	8	31.37377	69.33333
7	10	26.05004	66.66667
8	12	22.37814	64
9	14	19.68045	61.33333
10	16	17.60793	58.66667
11	18	15.96178	56
12	20	14.62009	53.33333

Creating the Graph

Construct a graph with the two series L(S) and L(K) and with M as the X-axis values. Figure 2.11 shows how the graph might look after you have fine-tuned it.

Notice that the vertical axis does not extend to negative values, which your graph will until you correct it. Make sure you figure out how to set the axis to prevent the negative values.

Figure 2.11 – the Cobb-Douglas Parameter worksheet





Modeling Output Supply

So what does this graph tell us? It says that if total investment is $K=60$ units then output supply of $S=50$ units can be achieved in two ways. Those two ways are represented by the points of intersection of the straight line and the curve. One way is to invest about 56 units in machinery and about 10 units in labour – this is the right hand point of intersection. The other way is to invest about 5 units in machinery and about 80 units in labour, which is the left-hand point of intersection.

But you can reduce total investment K and still achieve output supply of $S = 50$. Try it now – change K to say 40. You'll see that there are still two ways of achieving the output supply, which implies that you could reduce K further. Try setting $K=20$, for example. This has gone too far since the lack of an intersection implies that there are no possible values of investment in labour and machinery which will achieve $S=50$ when $K=20$.

The smallest total investment K will be the value that results in the line intersecting the curve in only one place. What is this minimum value of K ?

You could also reset $K=60$ and then see what maximum output supply can be achieved. What is the maximum Output Supply that can be achieved with a total investment of 60?